

[www.staedtleruhl.com](http://www.staedtleruhl.com)

## VARIO-Comb® Types


### first combing

product number	colour	teeth per row	teeth per cm <sup>2</sup>	total amount of teeth
12x KL EW 10 SC-RS	 black -  pink	10	55	90.667

### recombing

product number	colour	teeth per row	teeth per cm <sup>2</sup>	total amount of teeth
12x KL EW 10 OR-RS	 orange -  pink	10	65	106.435

### blend of wool with synthetic fibres for recombing

product number	colour	teeth per row	teeth per cm <sup>2</sup>	total amount of teeth
6x KL EW 10 OR-RS	 orange -  pink	10	65	102.177
6x KL EW 10 GU-RS	 grey -  pink	10	60	

## VARIO-Comb®

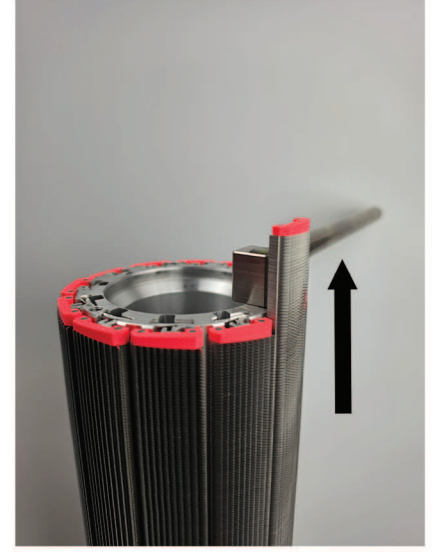
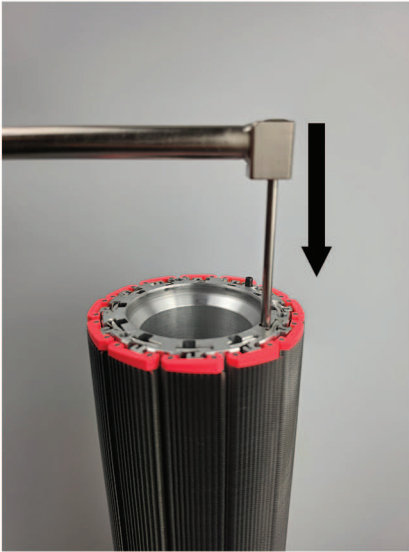
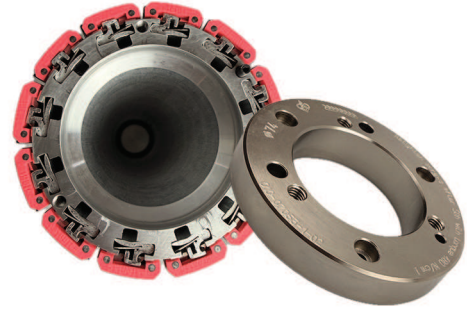
For NSC ERA  
combing machines

Our **VARIO-Comb®** for NSC ERA-combers combines all the advantages of our VARIO-System.

For ERA-combers our **VARIO-Comb®** consists of a basic body with a 360° combing section and removable VARIO-bars. The pinning density can be offered according to each customer's requirement.

# Easy exchange of VARIO-bars on VARIO-Comb® for NSC ERA combing machines

- 1 Remove the flange and take it off
- 2 Insert the S+U VARIO-bars changing tool and turn the handle 90°
- 3 Slide out the old VARIO-bar
- 4 Insert the new VARIO-bar
- 5 Turn the handle back into the starting position and remove the S+U VARIO-bars changing tool
- 6 Proceed in this manner with the remaining VARIO-bars
- 7 Finally reattach the flange



## Top Comb - Standard and VARIOTOP WT

As original equipment supplier for ERA-combers we rely on our experience of producing and developing standard top comb pin strips and VARIOTOP WT for decades.

### Top Comb Standard

#### Pinning Densities and Projections

pins/cm	projection (in mm)	
21	8,2	10,2
23	8,2	10,2
25	8,2	
26	8,2	
28	8,2	
30	8,2	
32	8,2	

### VARIOTOP WT

#### Available Pinning Densities

**VARIOTOP WT 35/28, 35/30, 35/32**

(corresponds to standard top combs with 28, 30, 32 pins per cm)



STAEDTLER+UHL KG  
Noerdliche Ringstrasse 12 | 91126 Schwabach | Germany  
Tel.: +49 (0) 9122 1860  
E-Mail: [staedtler@staedtleruhl.com](mailto:staedtler@staedtleruhl.com)  
Web: [www.staedtleruhl.com](http://www.staedtleruhl.com)

 Made in Germany